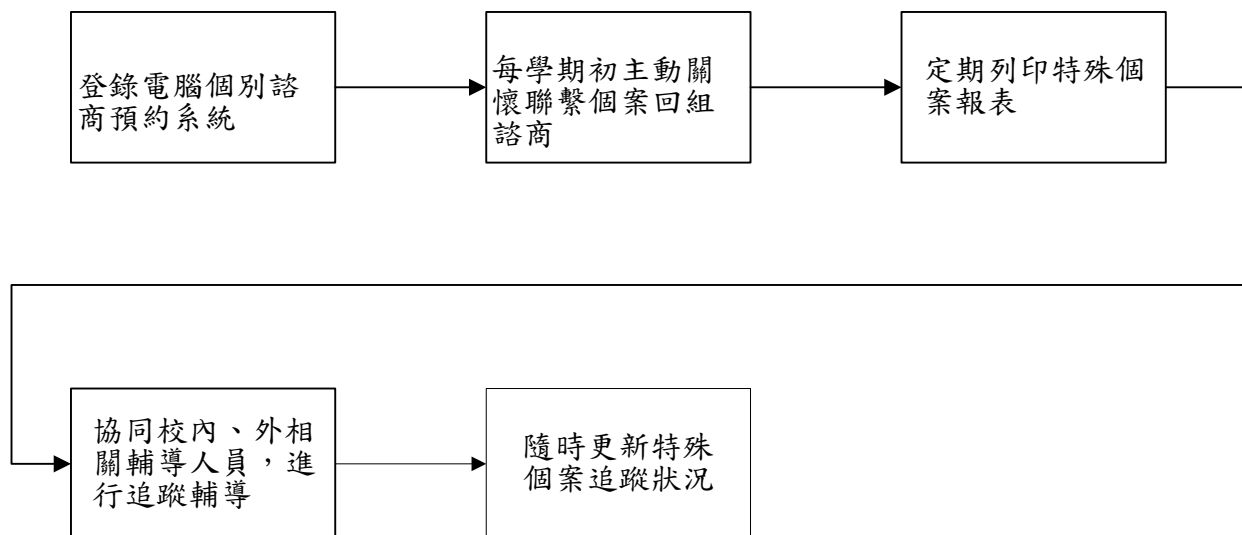
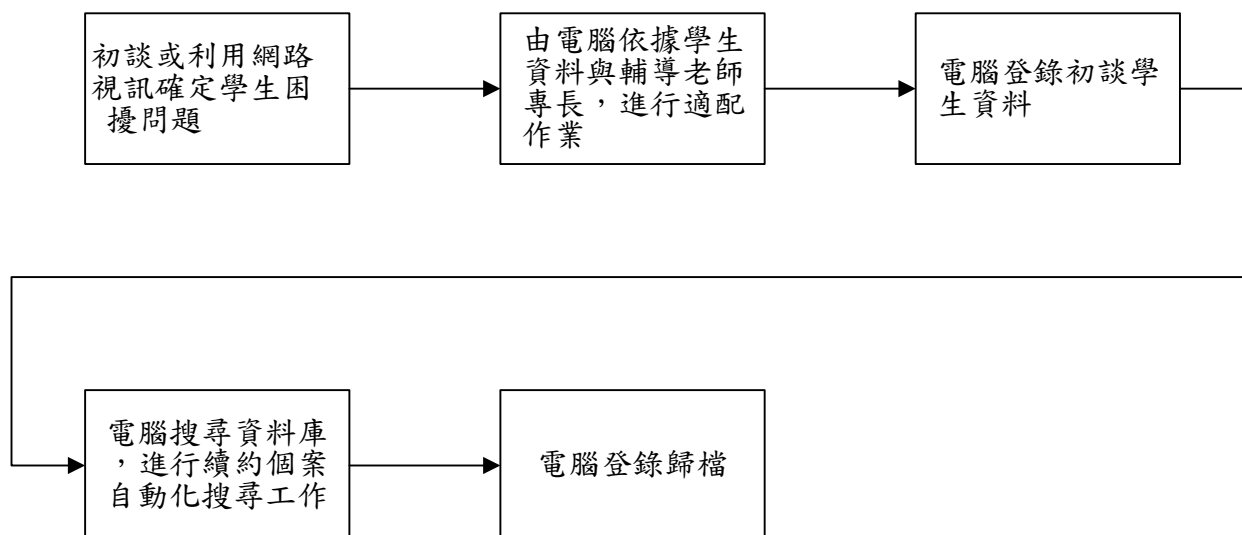


諮商輔導組工作流程

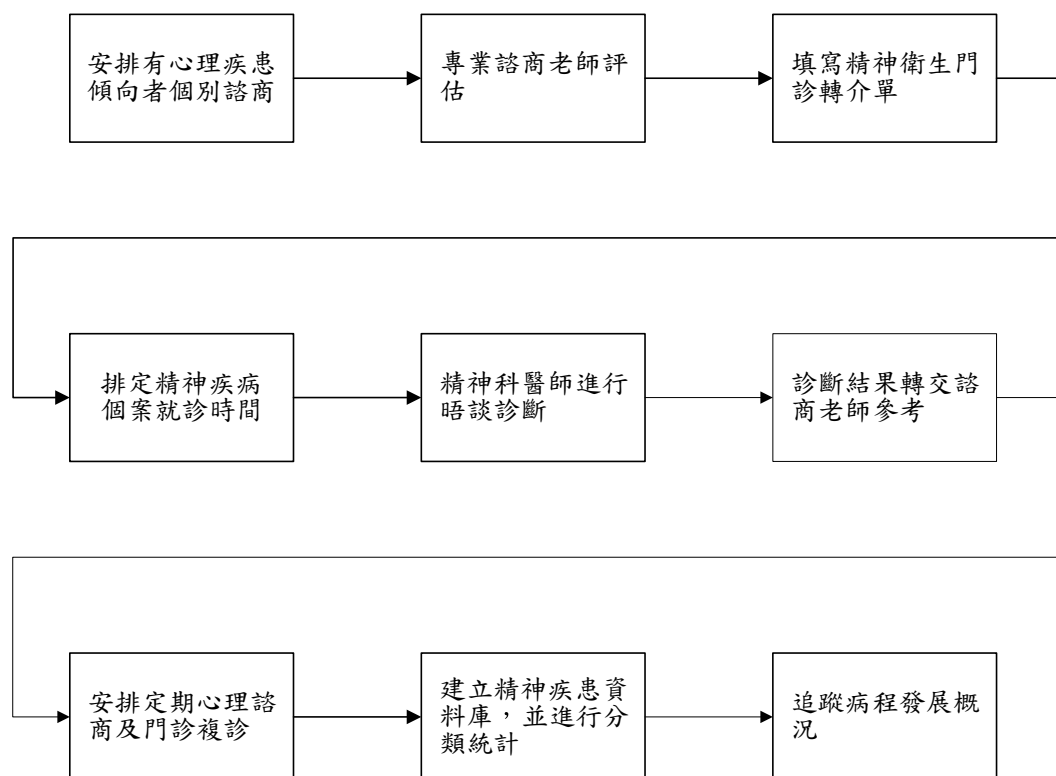
一、特殊個案追蹤管理



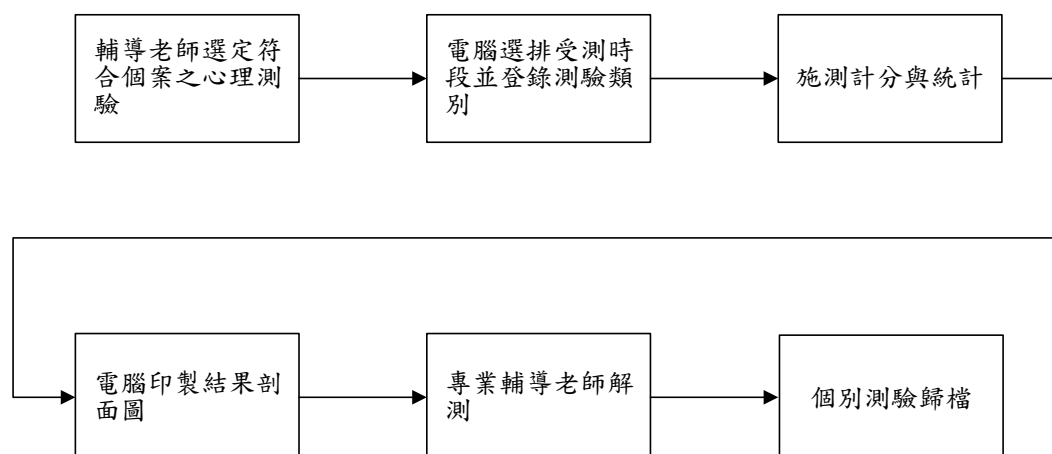
二、個別諮商電子預約系統



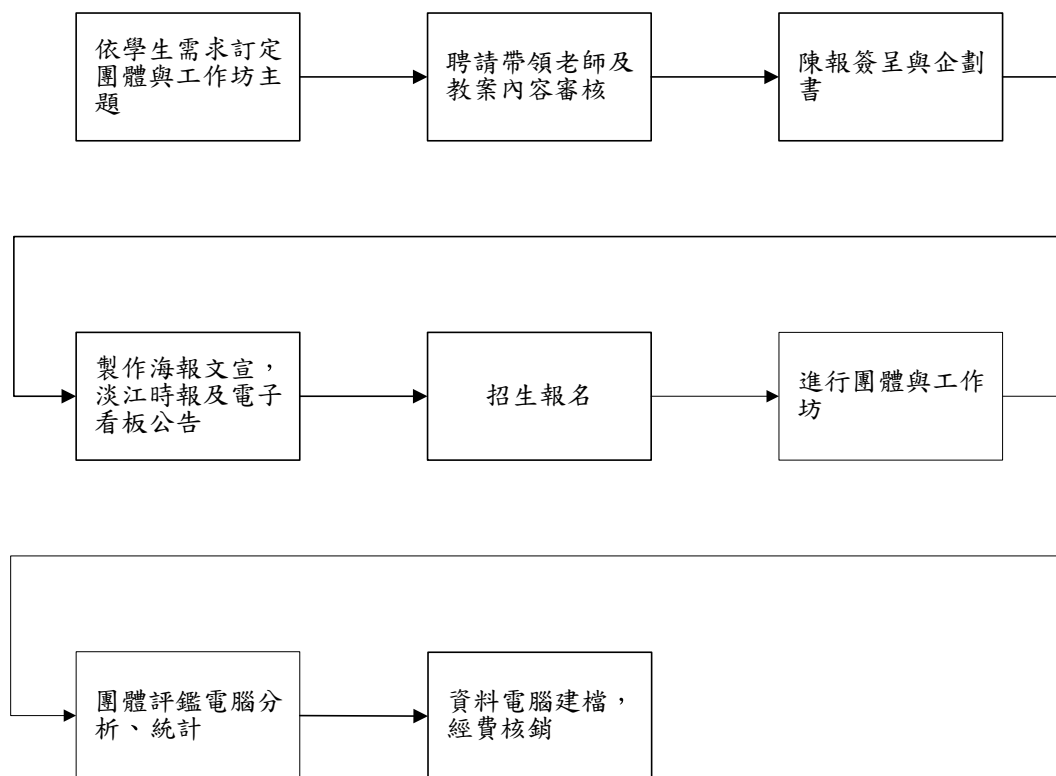
三、精神衛生門診



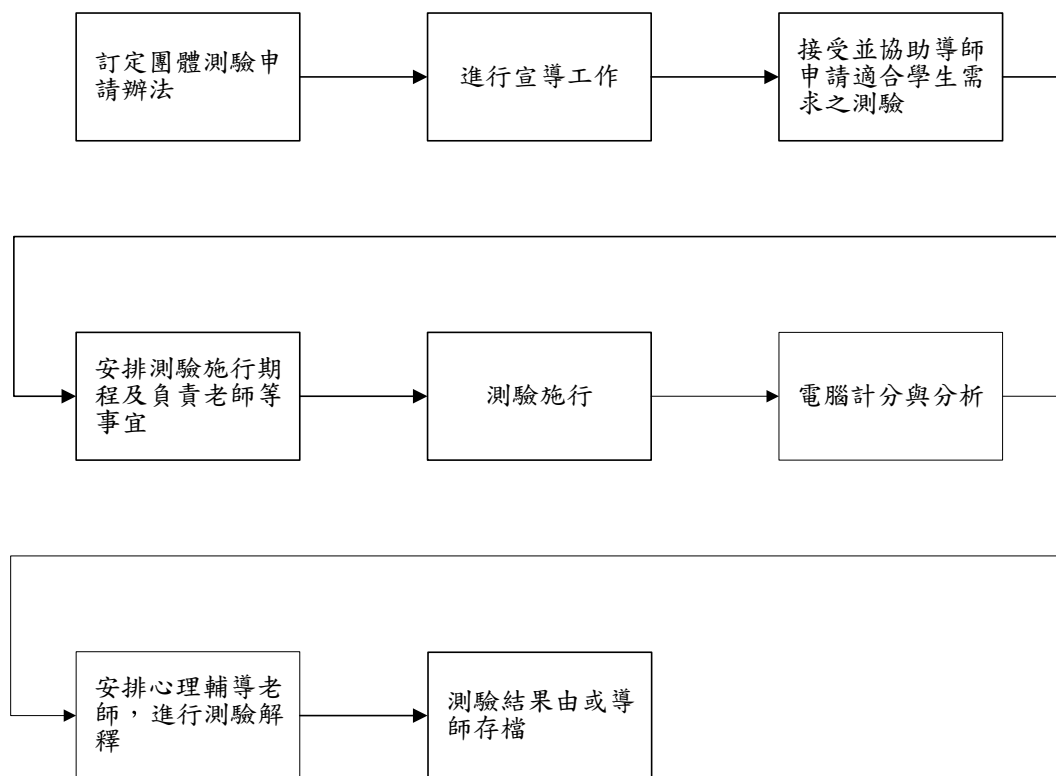
四、個別心理測驗



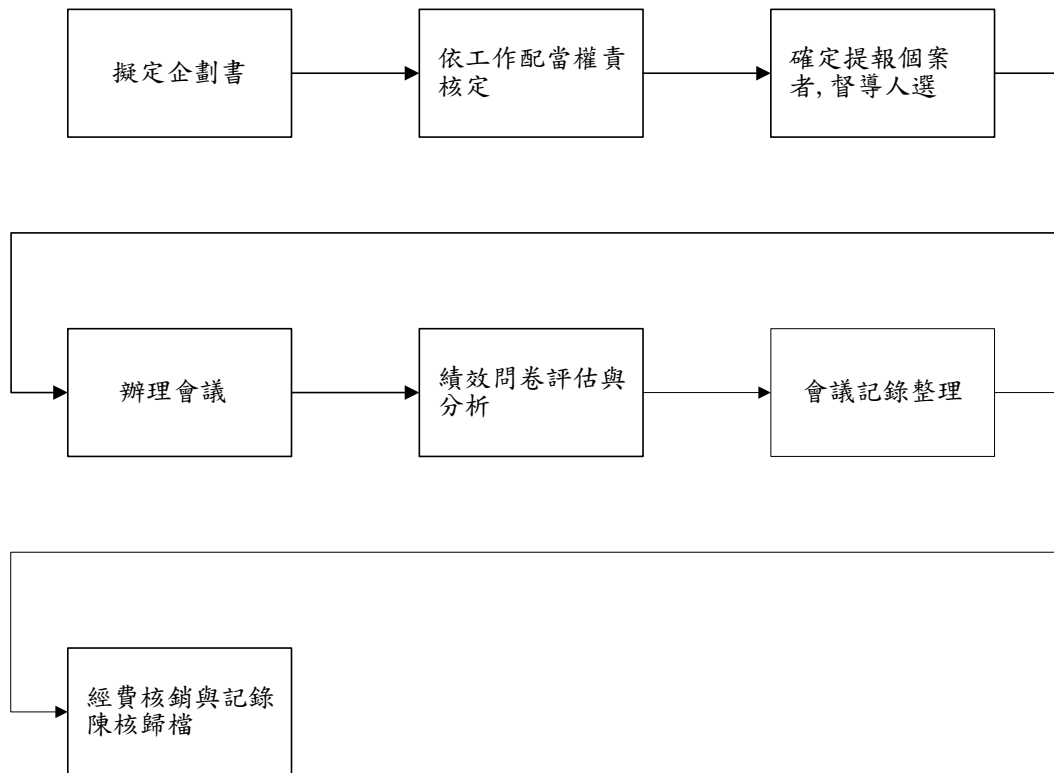
五、團體輔導暨心理工作坊



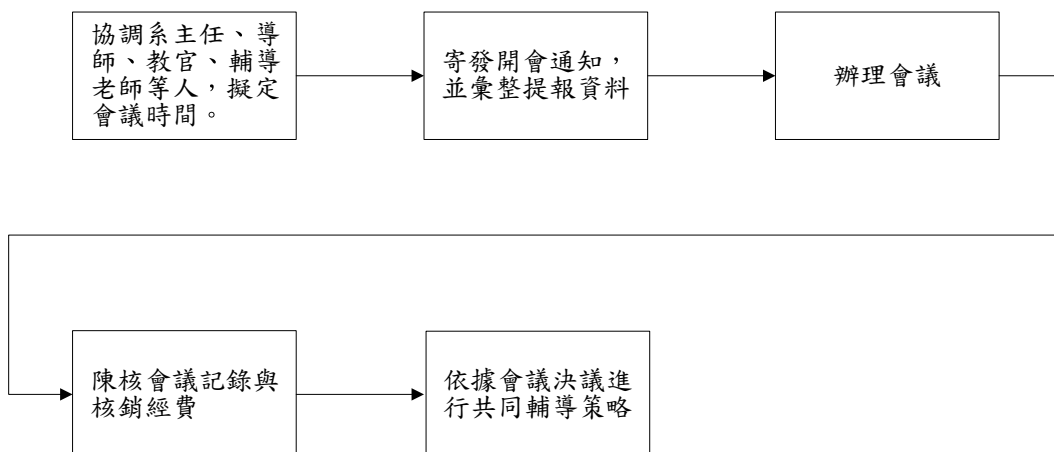
六、導師班級團體心理測驗



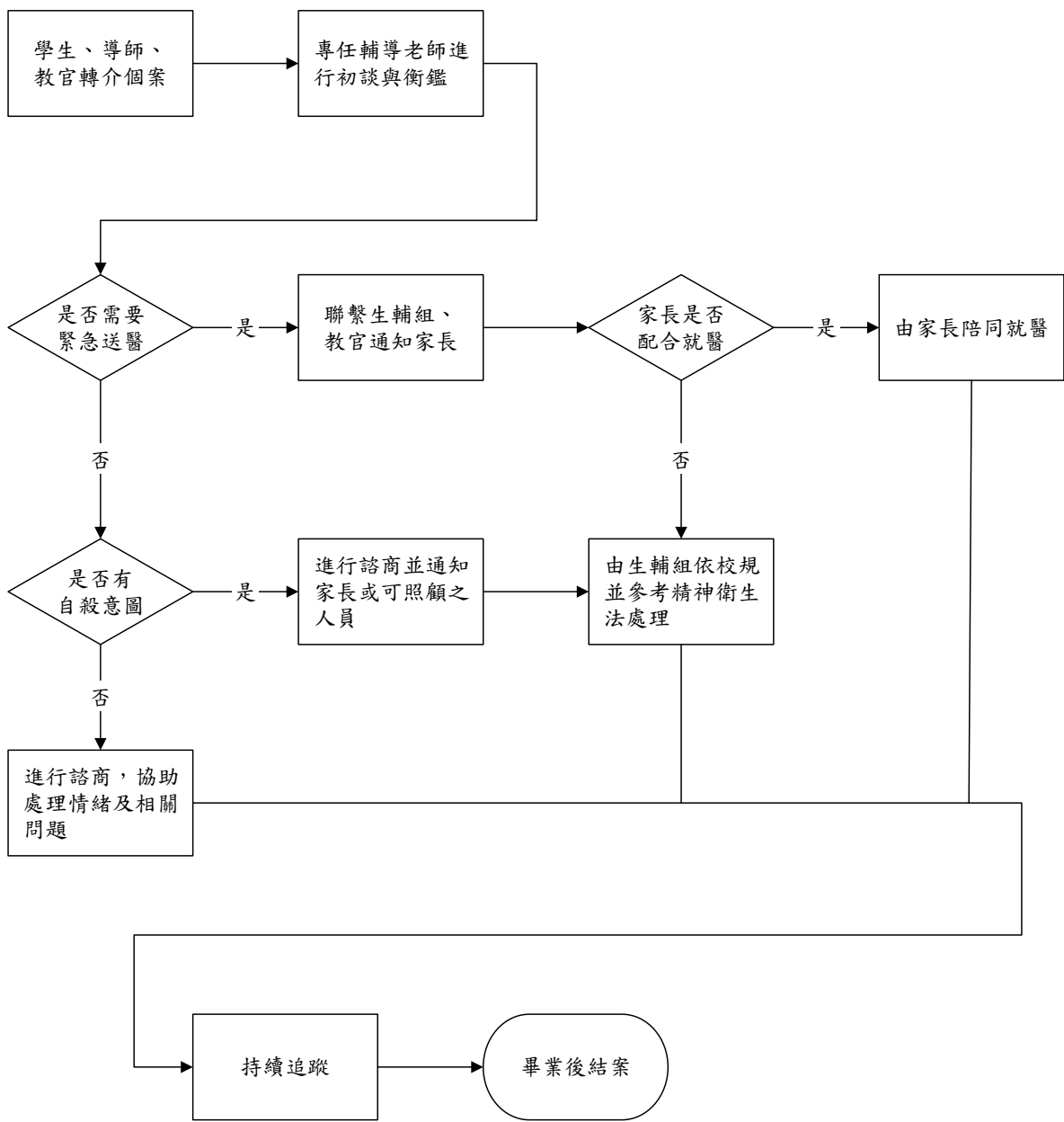
七、個案研討暨團體實務研討會



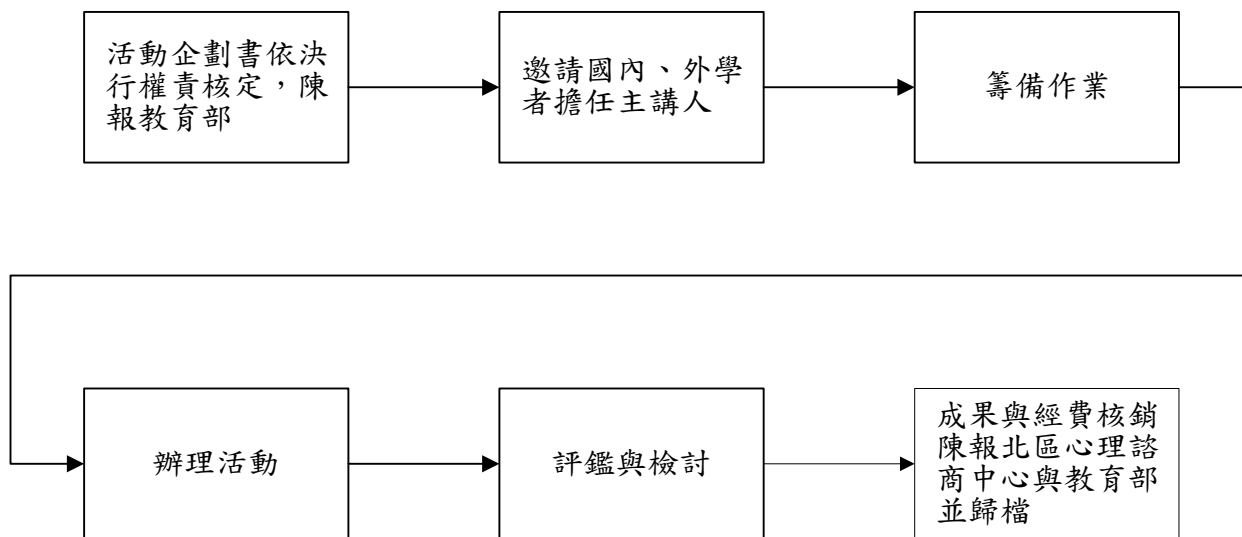
八、特殊個案協調會



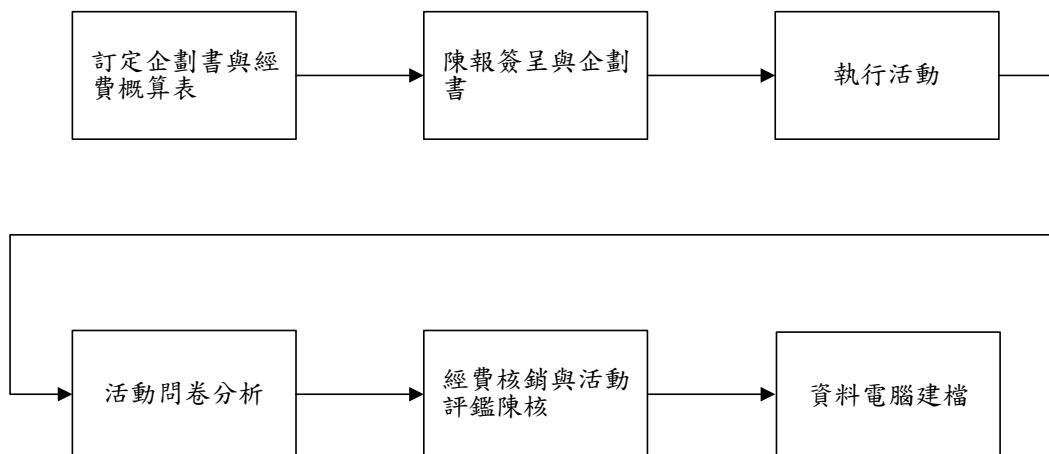
九、心理危機個案處理



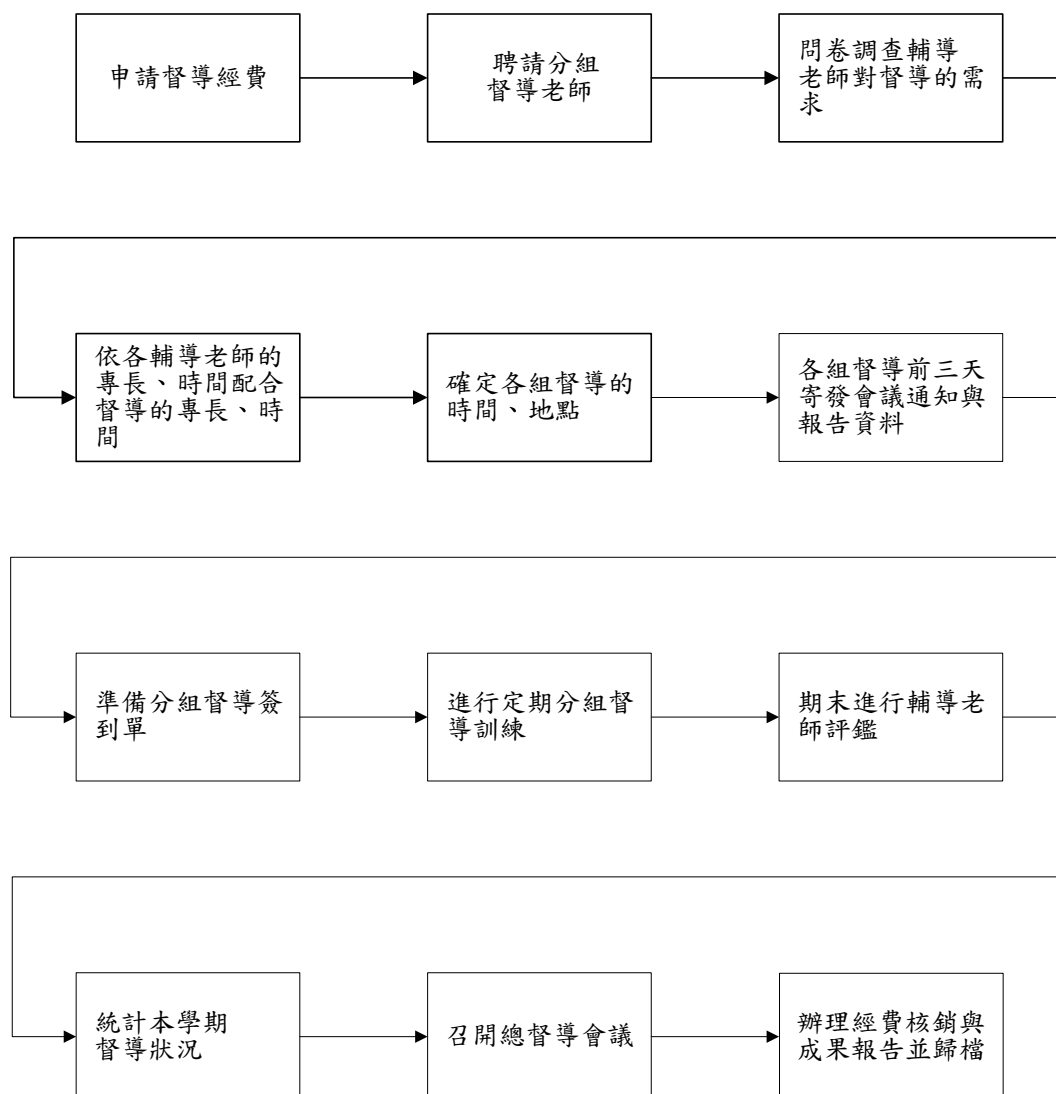
十、跨校性專業輔導研討會



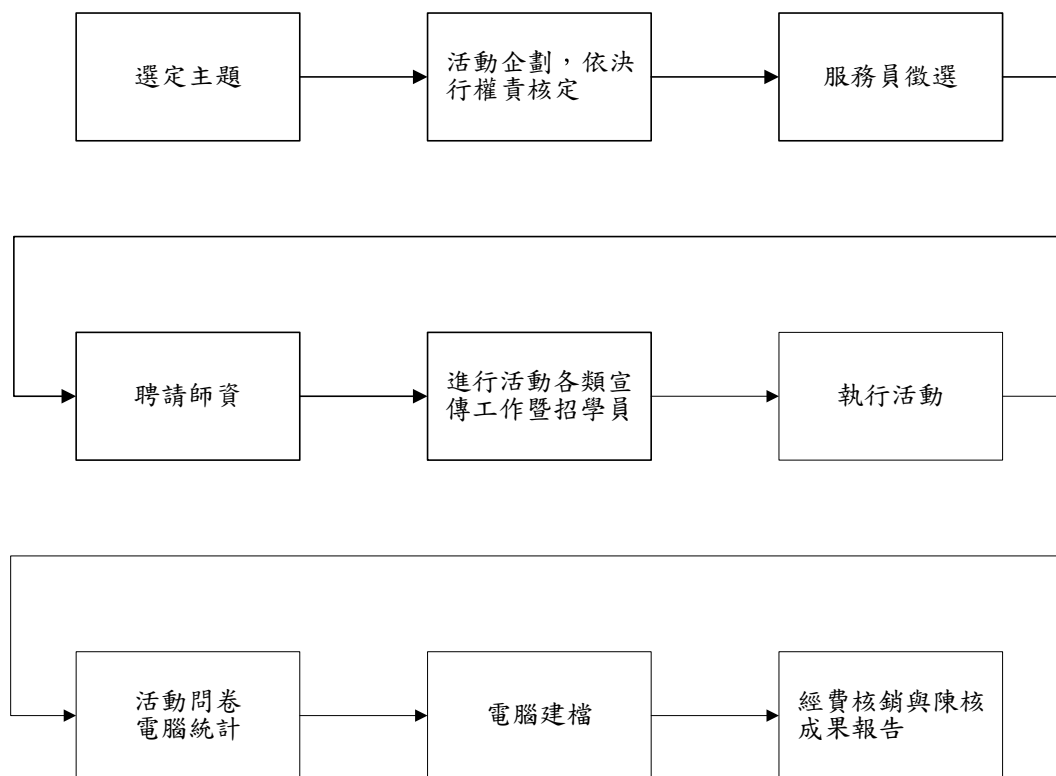
十一、性別平等推廣教育



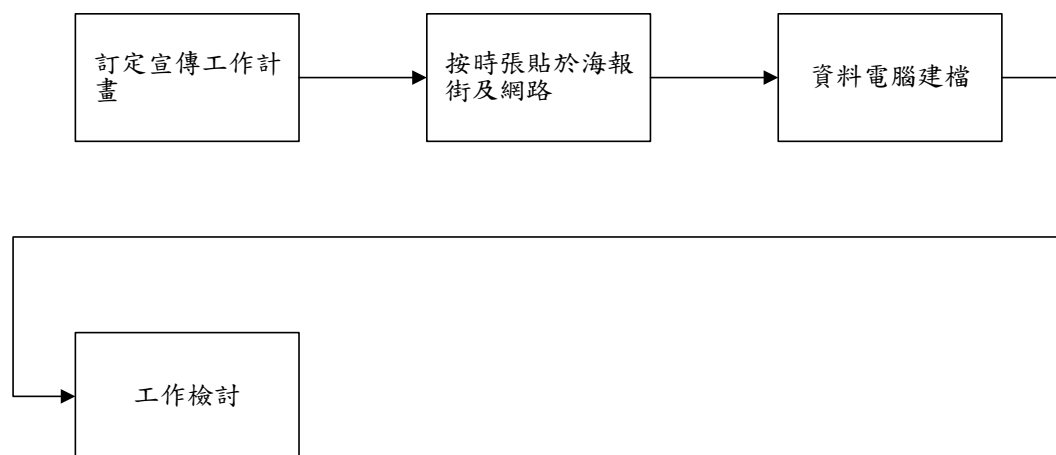
十二、分組督導



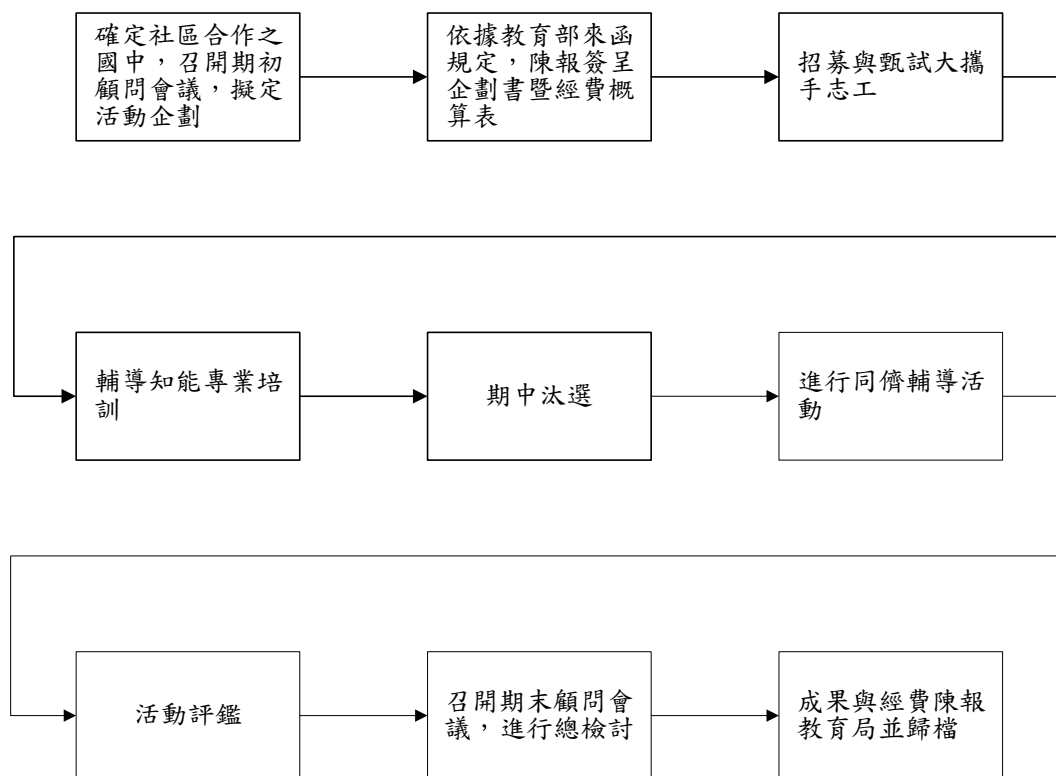
十三、同儕守護研習營



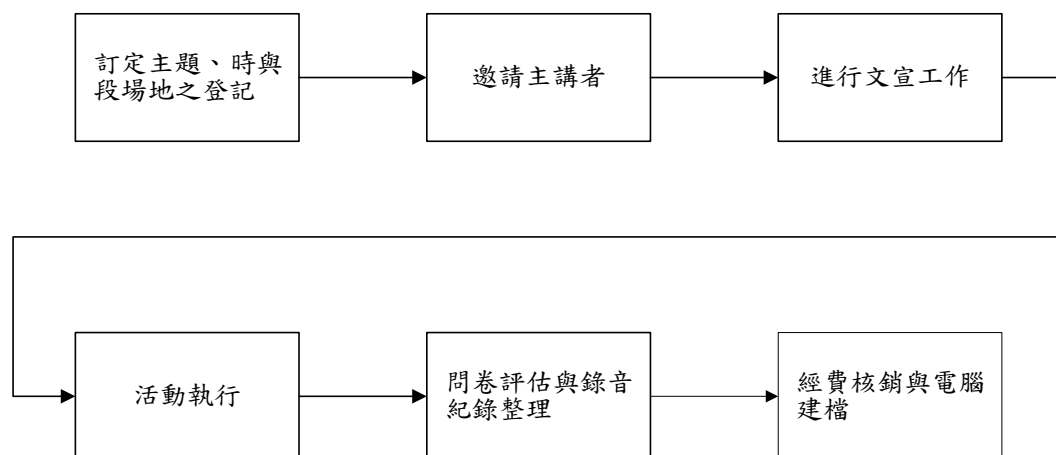
十四、全校性心理衛生宣導工作



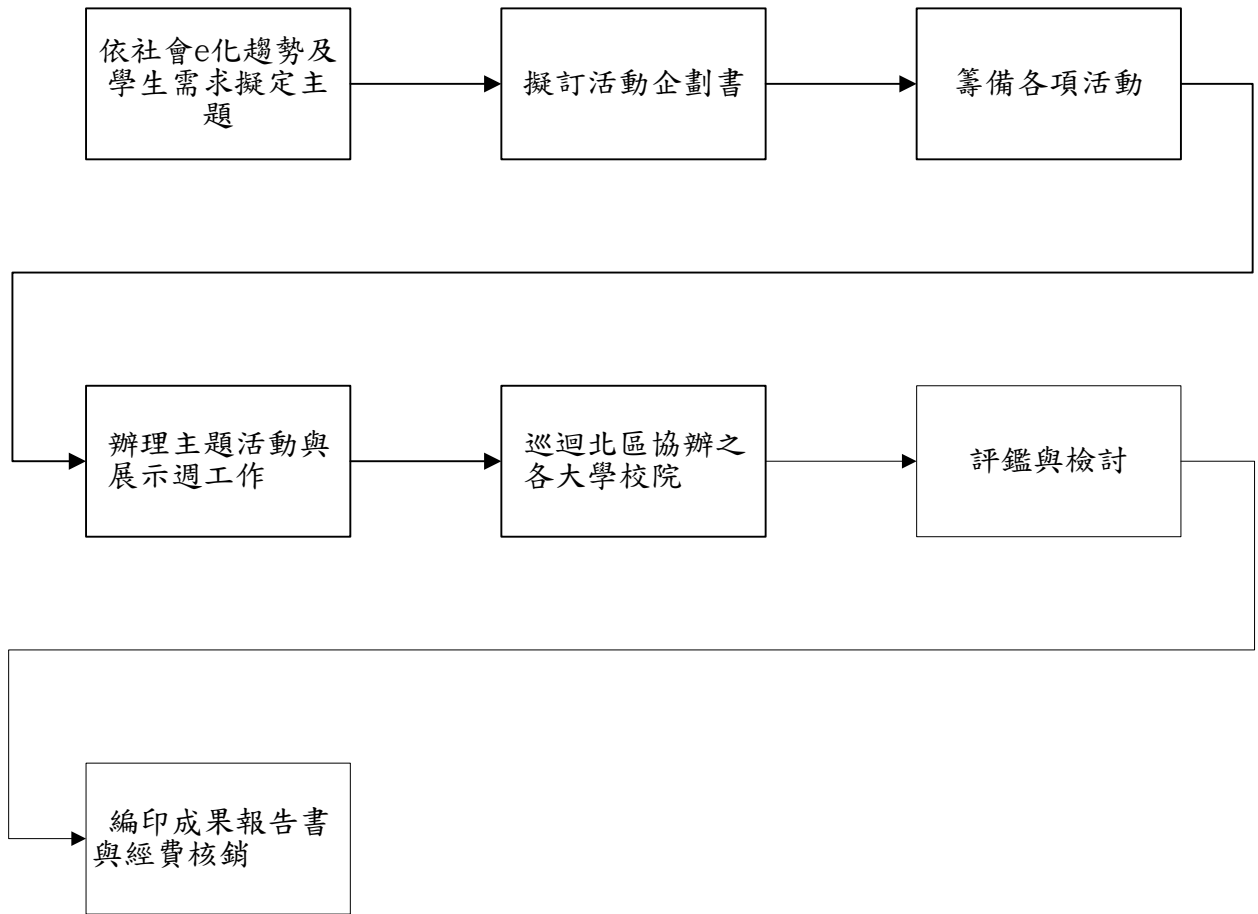
十五、「馬偕關懷兒童志工專案」專案



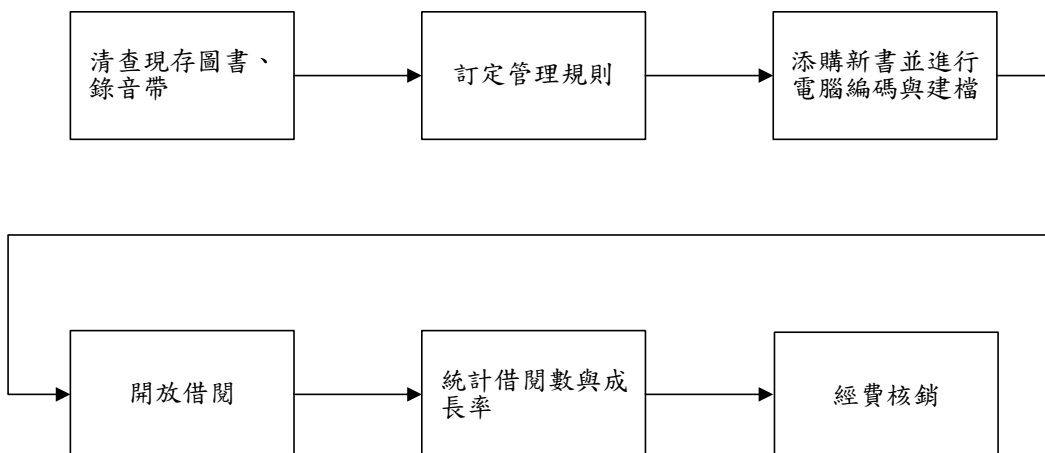
十六、全校性演講與各單位採訪事宜



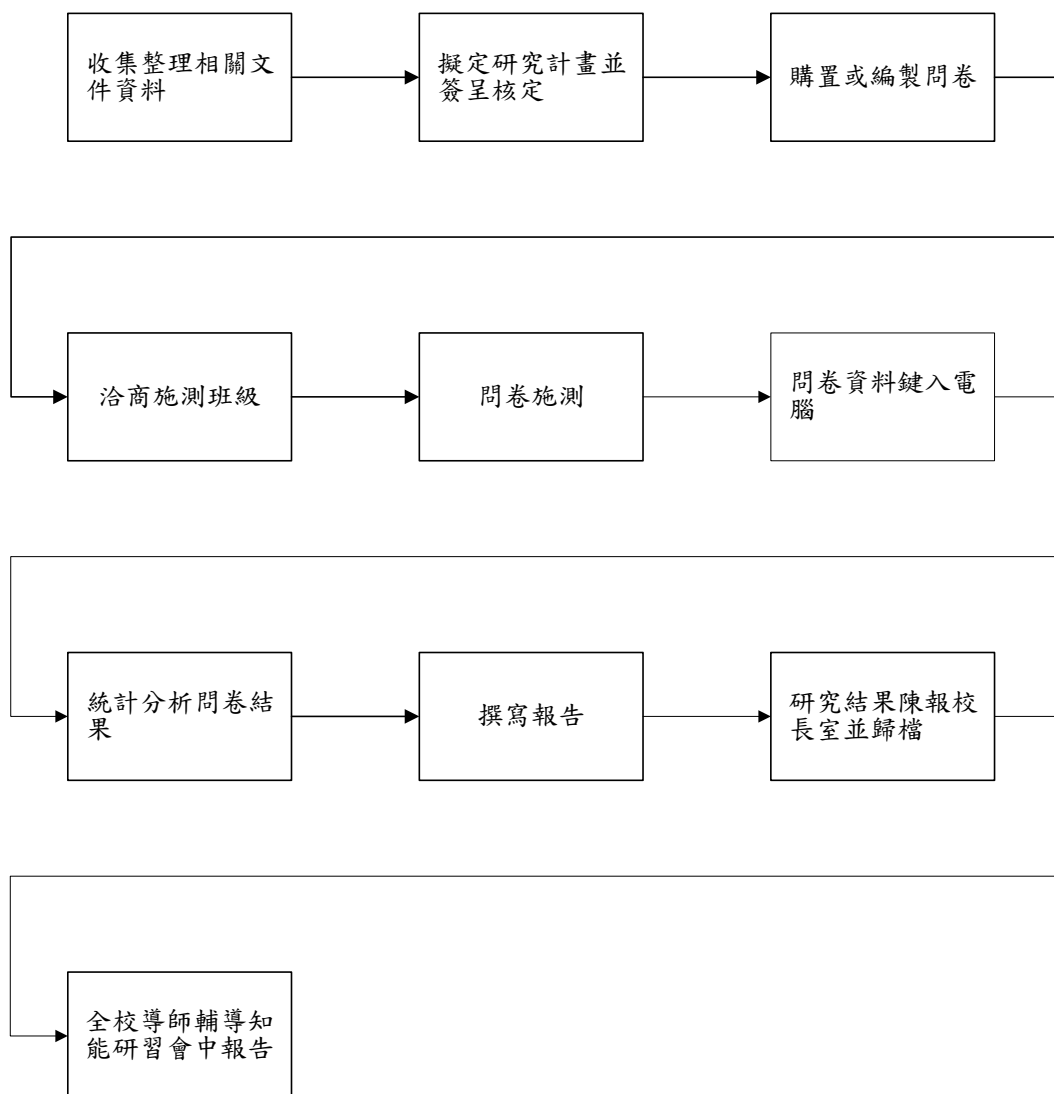
十七、心理衛生主題輔導週



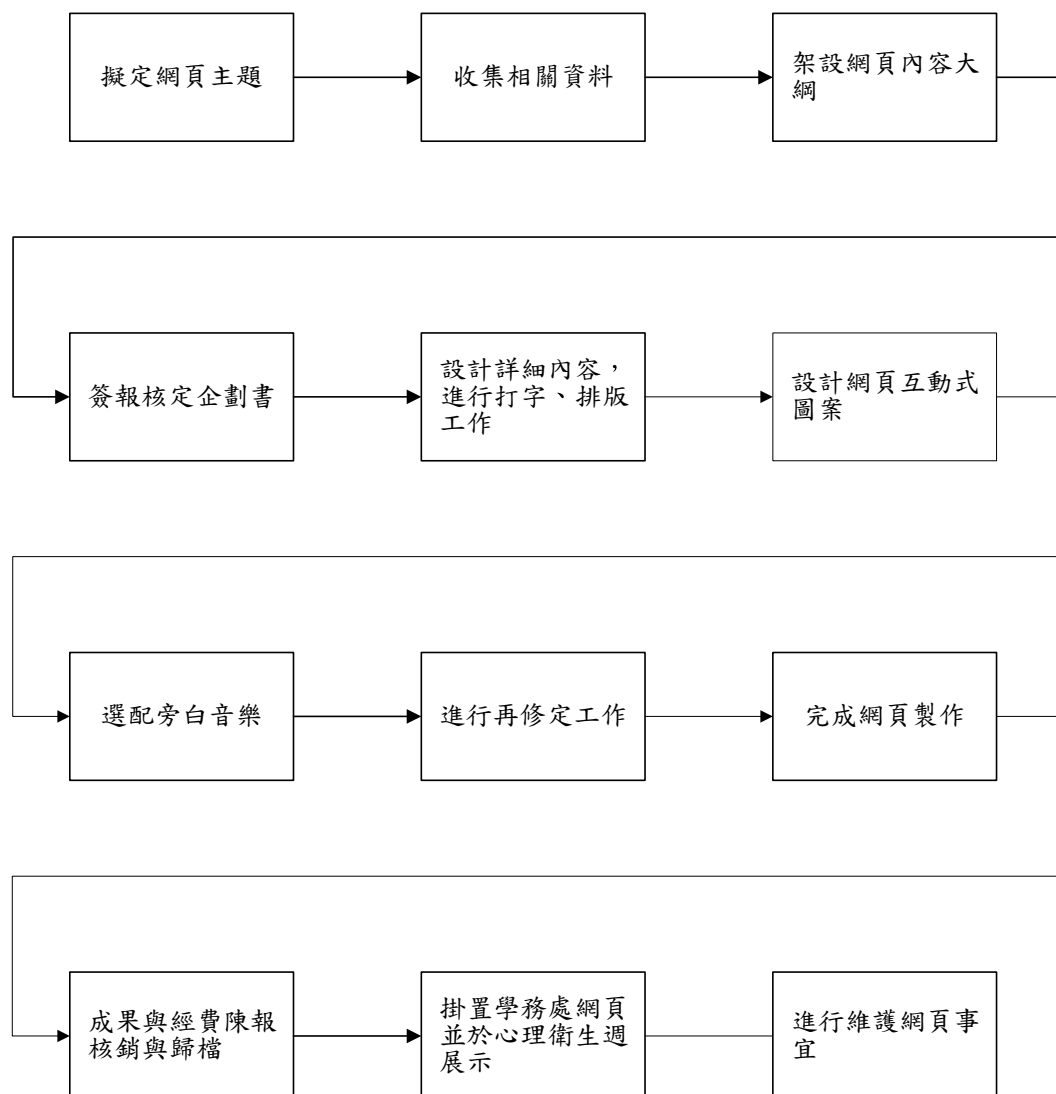
十八、圖書、錄音帶管理



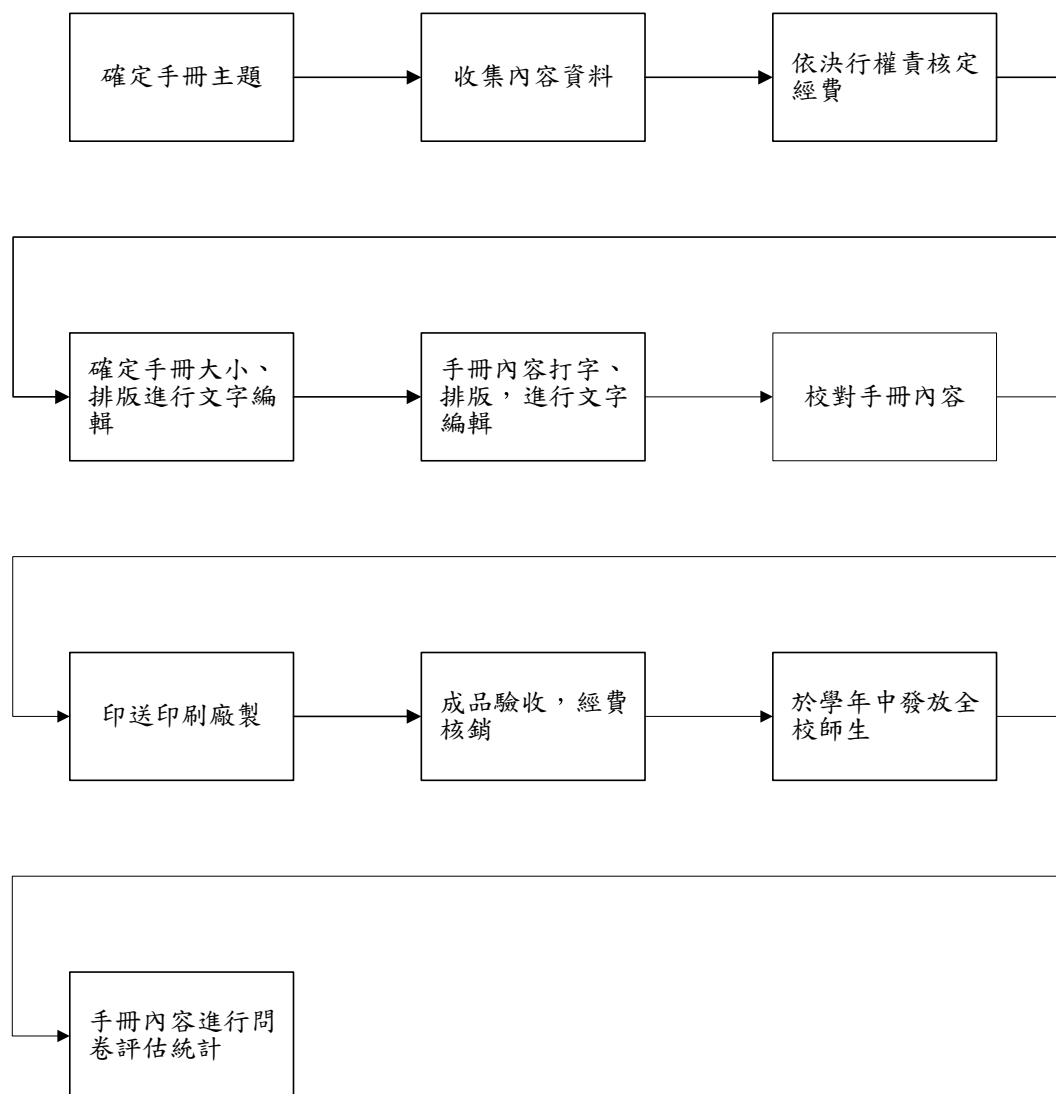
十九、全校性大學生心理主題調查研究案



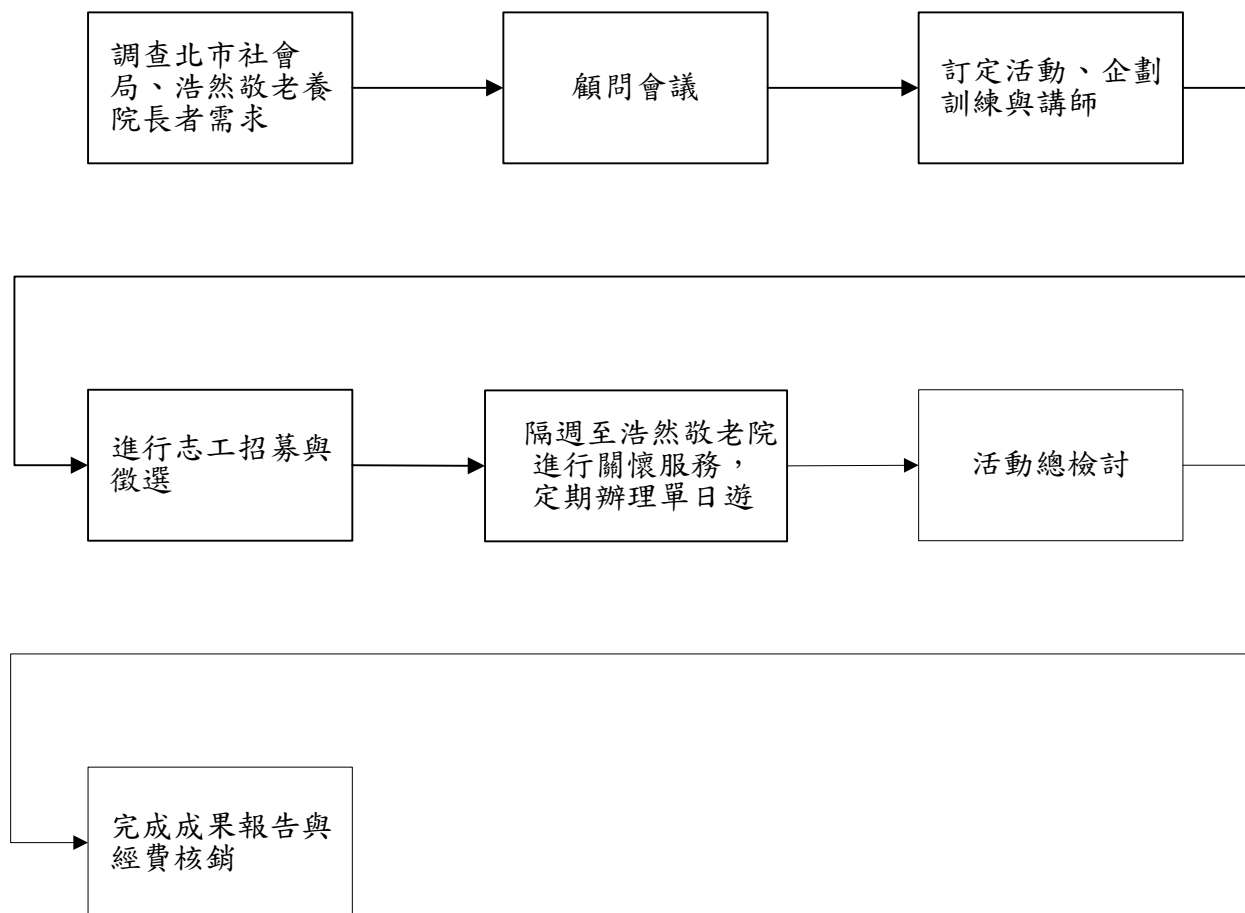
二十、設置心理主題網頁



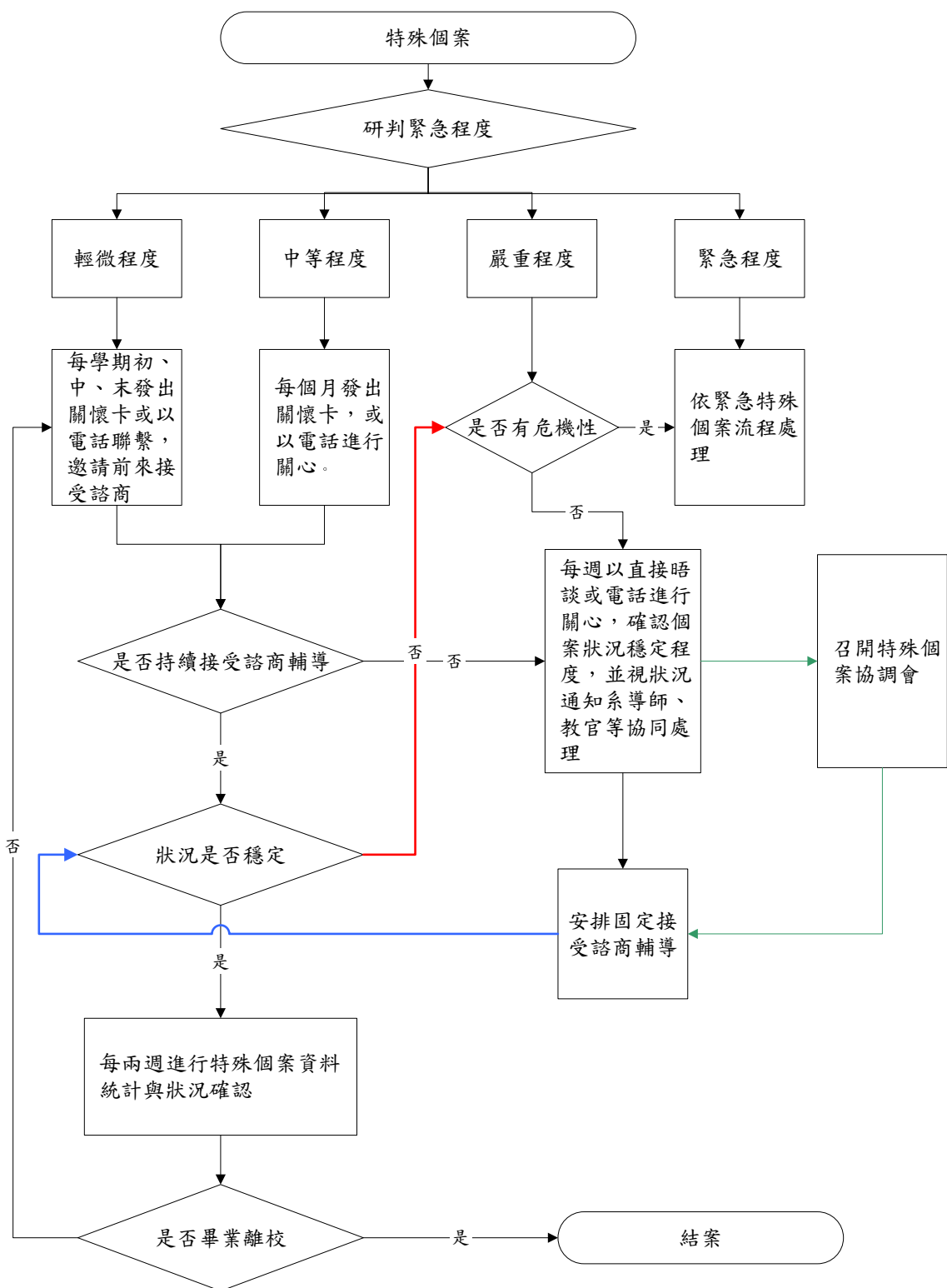
二一、輔導手冊編製



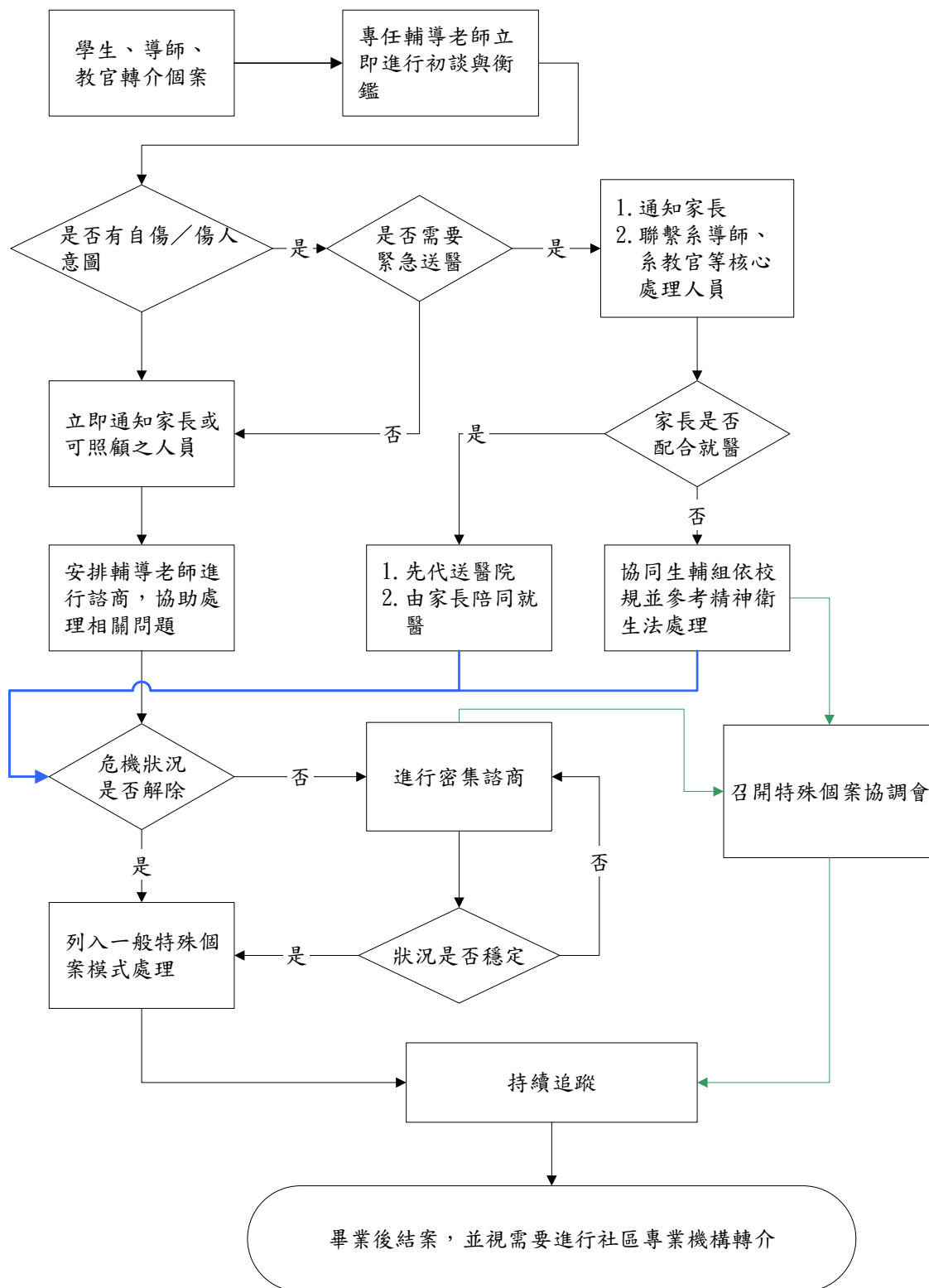
二二、北市社會局「校園守護天使」專案



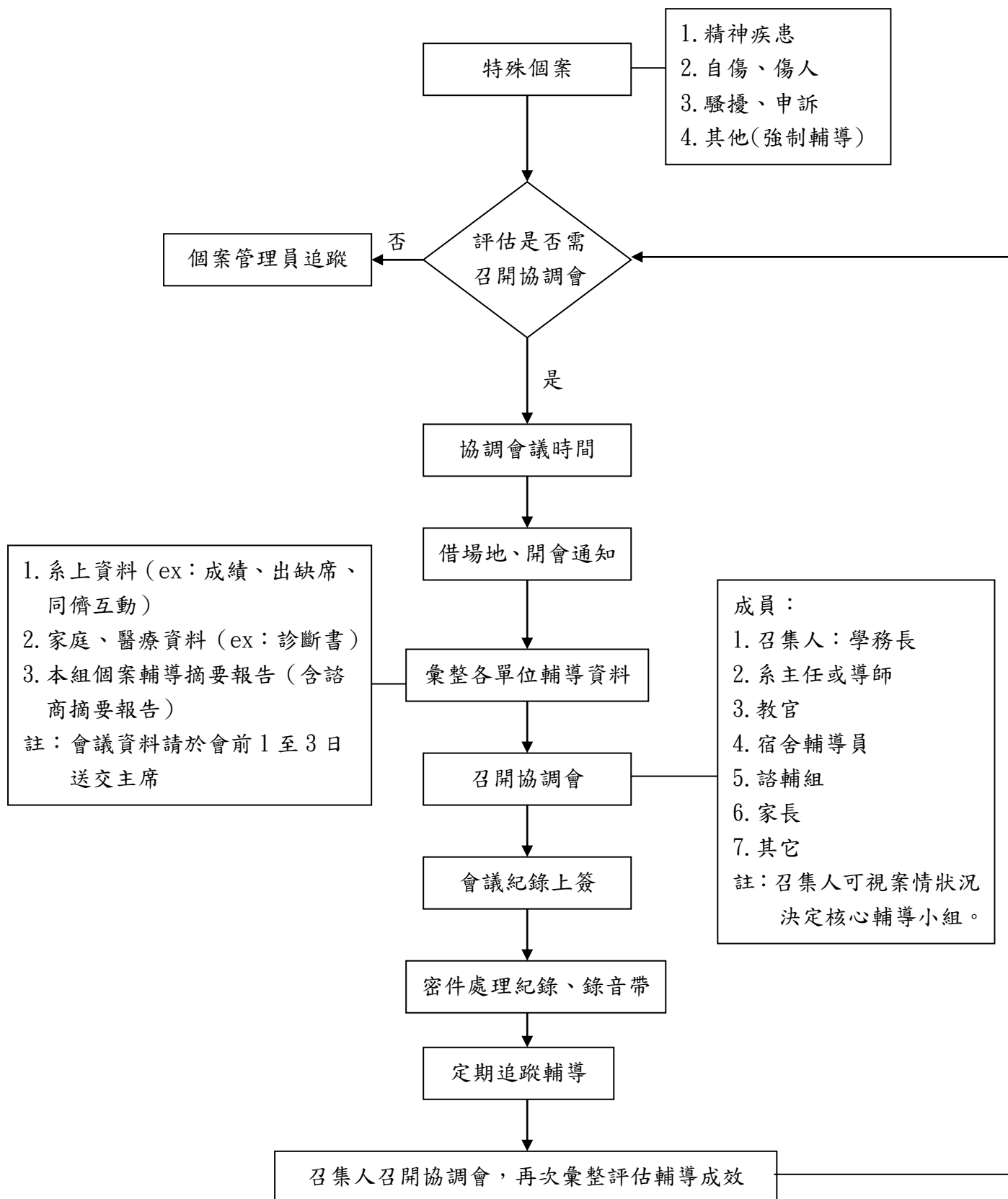
二四、一般特殊個案處理流程



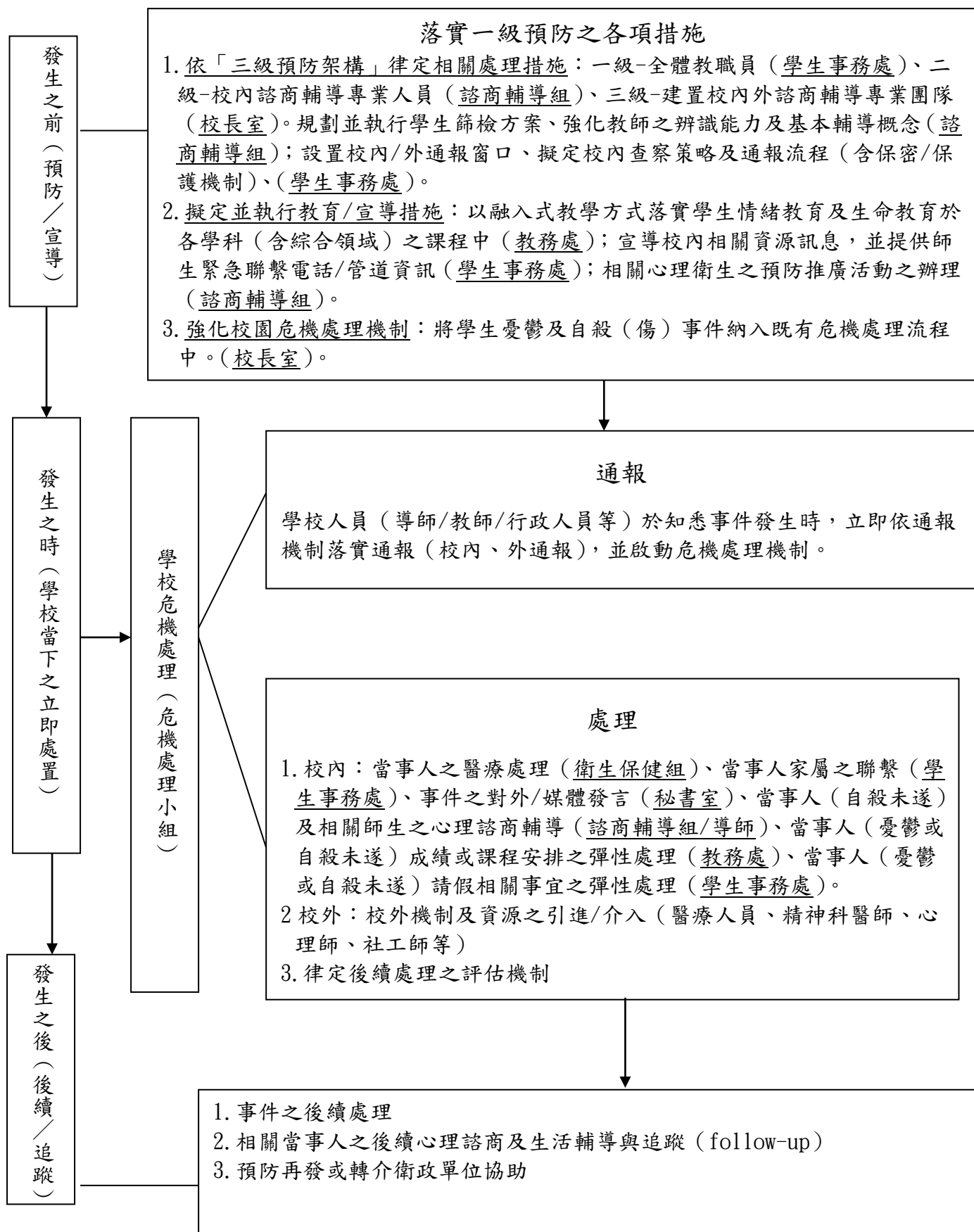
二五、緊急特殊個案處理流程



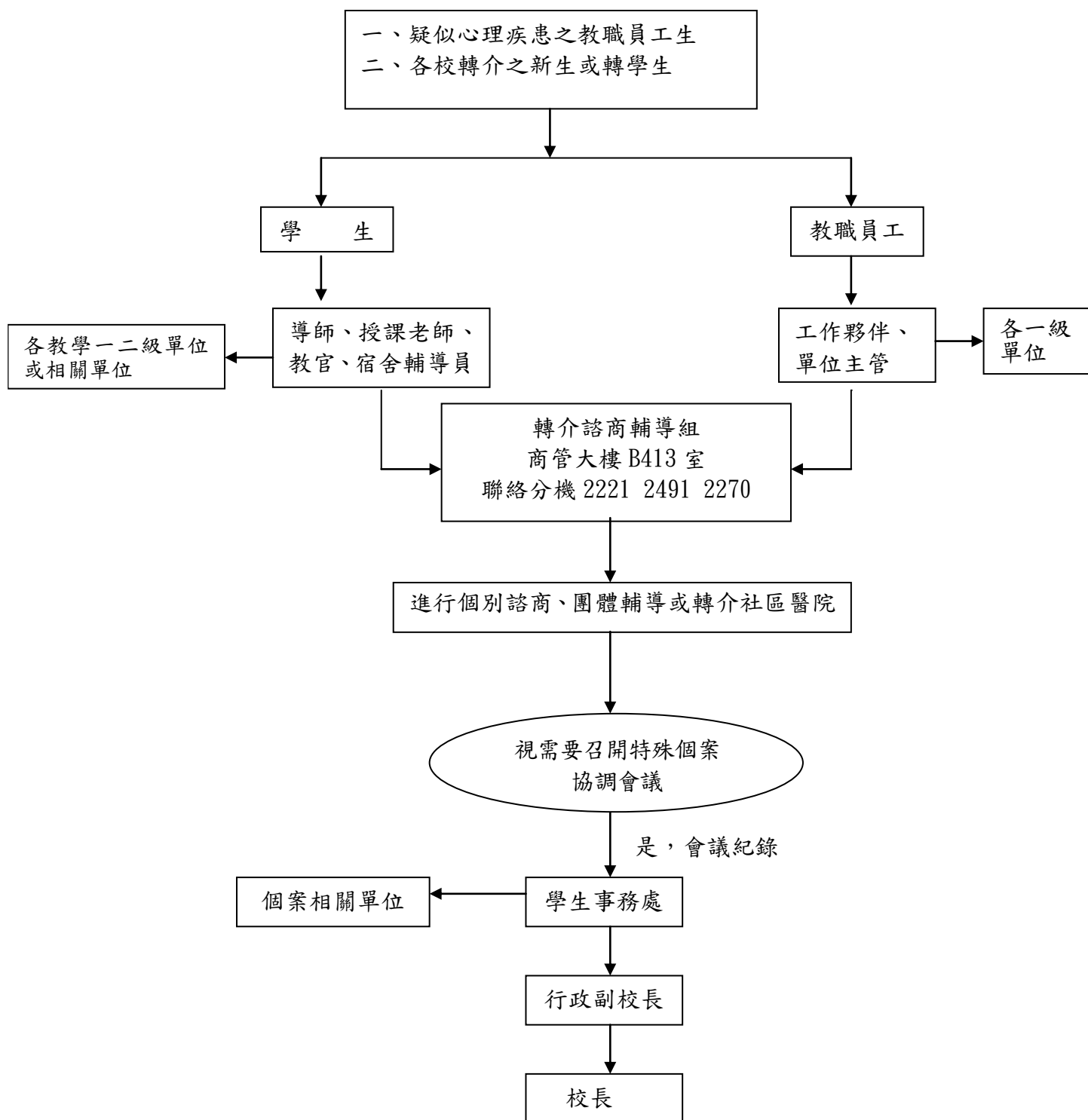
二六、個案輔導協調會流程



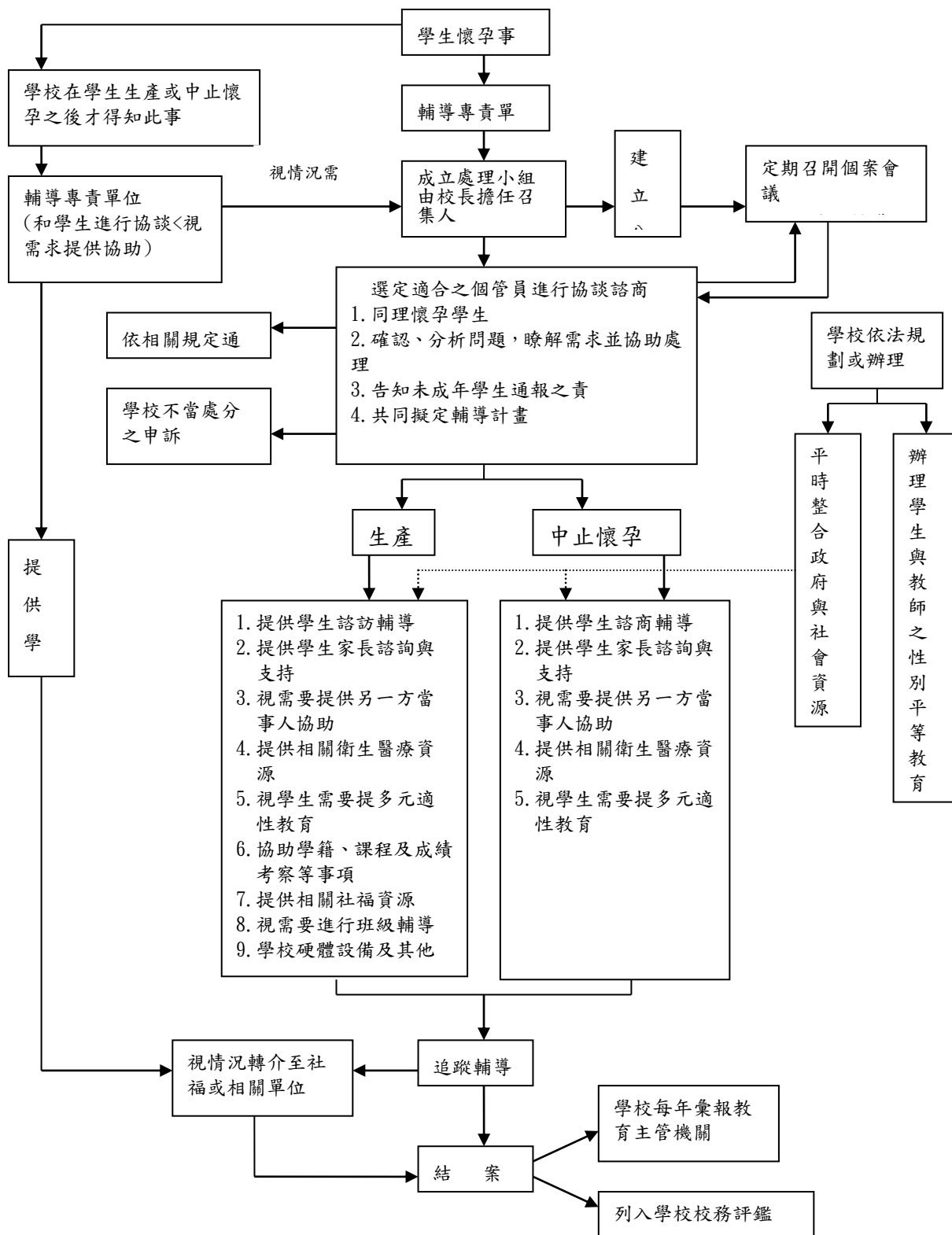
二七、學生憂鬱及自殺（傷）防治處理機制流程圖



二八、教職員工生心理疾患轉介通報流程圖



二九、學生懷孕事件輔導與處理流程



三十、大一身心適應調查流程圖

